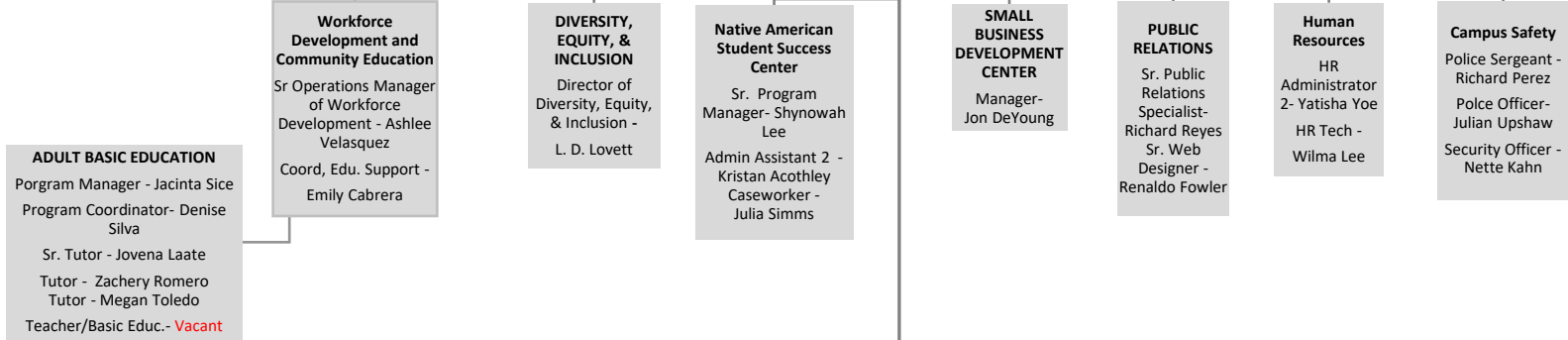




Advisory Board

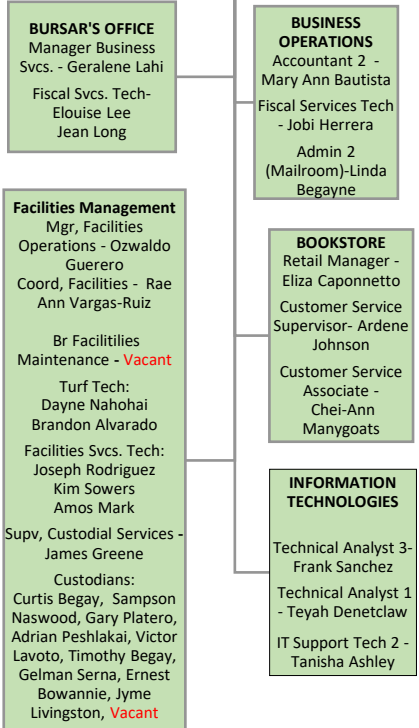
UNM GALLUP CAMPUS  
Chancellor  
Sabrina Ezzell



Director of Business Operations  
Robert Griego

Dean of Instruction  
John Zimmerman

Director of Student Affairs  
Jayme McMahon



LIBERAL ARTS & EDUCATION  
Chair - Matthew Mingus  
Admin Assistant - Sharie Begay

NURSING & HUMAN SERVICES DIVISION  
Nursing Director -Rey Jonathan Lumibao  
Student Success Splst, Sr - Grace Lueras  
Admin Assistant 2 - Michelle Palacios

APPLIED TECHNOLOGIES, & ALLIED HEALTH SCIENCES  
Chair - Ann Jarvis  
Admin Assistant 2 - Lana Littleman

ZOLLINGER LIBRARY  
Director - Markos Chavez  
Library Info Specialist II - Yolanda Chavez  
Library Info Specialist 1 - Fredrick Stephens  
Admin Assistant 2 - Lemanda Norton

MATHEMATICS, BUSINESS, SCIENCES & TECHNOLOGY  
Chair - Alok Dhital  
Admin Assistant 3 - Monica Wyaco  
Lab Tech- Amanda Crump

CENTER FOR CAREER & TECHNICAL EDUCATION  
Director of CTE- Karla Baladonado  
Program Coordinator - Dawn Garcia

Education Director - Vacant

MLT Program Director - Lucia Guerrero

EMT Director - Jacob Lacroix

Dental Assistant Director - Nessa Cox

Dir. of Law Enforcement Academy - David Eberhardt  
Coord, Education Support - Merle Bates  
Admini Asst 2 - Jennifer Bates

Admin Assistant to Dean - Tina Griego

